

SYNCHRONIZED TELESCOPIC JACK - 2 STAGES



CUSTOMER'S INFORMATION:

COMPANY NAME : _____

TEL : _____

DATE : _____

EMAIL : _____

PROJECT/REFERENCE : _____

JACK DATA :

Capacity (Pound) : _____ Car Weight (Pound) : _____

Speed (Ft/Min) : _____ Travel (In) : _____

Twin Single New
 Vic NPT Male NPT Female

Existing :

Ø PISTON (A) _____

Rupture Valve : Yes No

Ø CASING (E) _____

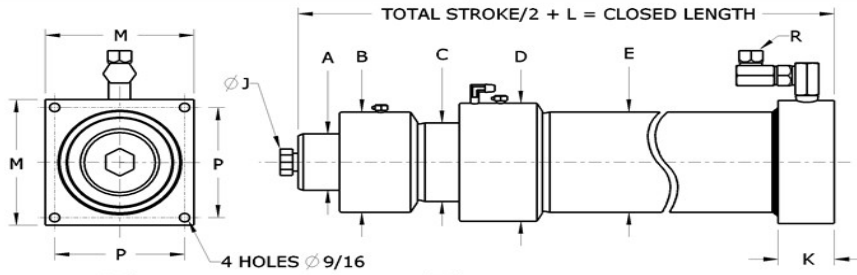
NPT VIC

Ø OIL INLET _____

Support plate : Square Plate Round Plate

Alignment Pin

Follower Guides



POWER UNIT DATA :

TYPE : DRY SUBMERSIBLE

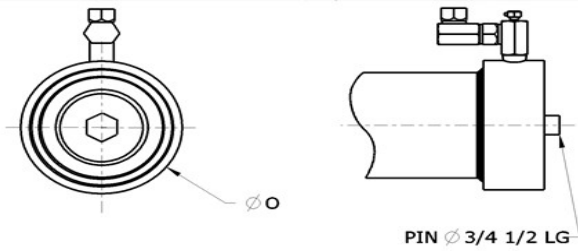
START : 80 120

MOTOR VOLTAGE : 220/1/60 208/3/60 230/3/60
 460/3/60 575/3/60 OTHER : _____

OPTIONAL ACCESSORIES DESIRED :

- Ball valve
- Thermal block
- Pressure negative switch
- Insulating coupling
- Line strainer

- Oil heater
- Oil cooler
- Thermistor
- Drip pan
- Scavenger pump
- Temperature regulator
- Controller mount
- Anti-vibration pad



OIL INLET OPTIONS:
 ■ NPT Male
 ■ NPT Female
 ■ VIC

A	B	C	D	E	J	K	L	M	O	P	R
Ø PISTON	Ø HEAD	Ø PISTON	Ø HEAD	Ø CASING	Ø BOLT	BASED THICKNESS	DEAD LEN-GHT (IN)	SQUARE BASE	Ø ROUND BASE	HOLE DISTANCE	Ø OIL INLET
1 1/2 SP	3	2	4	3	1/2 NC	1 1/2	16	4X4	4	3	1/2 NPT
1 1/2	3 1/2	2 5/8	4 1/2	3 1/2	1/2 NC	1 1/2	17	6X6	4 1/2	5	1/2 NPT
1 3/4	4	2 3/4	5	3 3/4	3/4 NC	1 1/2	17	6X6	5	5	1/2 NPT
2	4	2 7/8	5	4	3/4 NC	1 1/2	19	6X6	5	5	1/2 NPT
2 SP	4 1/2	3 1/2	5 1/2	4 1/2	3/4 NC	3	21	6X6	5 1/2	5	2 VIC
2 1/2	5	3 3/4	6	5	1 NC	3	23	7X7	6	6	2 VIC
3	5	4	6 1/2	5 1/2	1 NC	3	24	7X7	7	6	2 VIC
3 SD	5 1/2	4 5/8	7	6	1 NC	3	24	7X7	7	6	2 VIC
3 1/2 SP	6 1/2	5 1/2	8	7	1 1/4 NC	3	26	8X8	8	7	2 VIC
4	7	5 3/4	8 1/2	7 1/2	1 1/4 NC	3	27	9X9	8 1/2	8	2 VIC
4 1/2	7	6	8	8	1 1/4 NC	3	28	9X9	9	8	2 VIC
5	7 1/2	6 1/4	9	9	1 1/4 NC	3	31 1/2	11X11	11	10	2 VIC
5 SP	8 1/2	7 1/2	10	10	1 1/4 NC	3	31 1/2	11X11	11	10	2 VIC
5 1/2	7 1/2	6 1/2	9 1/2	9 1/2	1 1/4 NC	3	32 1/2	11X11	11	10	2 VIC
6	9	8	11	11	1 1/4 NC	3	36	12X12	12	11	2 VIC

IMPORTANT :

BOT : _____ TOT : _____

STANDARD BOT AND TOT	0/25 FEET/MINS		26/50 FEET/MINS		51/75 FEET/MINS		76/100 FEET/MINS		101/125 FEET/MINS		126/150 FEET/MINS		151/200 FEET/MINS	
TELESCOPIC 2 STAGES	BOT	TOT	BOT	TOT	BOT	TOT	BOT	TOT	BOT	TOT	BOT	TOT	BOT	TOT
RECOMMENDED VALUE	4"	6"	8"	10"	10"	12"	10"	12"	10"	14"	10"	14"	12"	20"
MINIMUM VALUE	2"	4"	4"	6"	6"	9"	8"	10"	8"	10"	8"	10"	10"	12"

NOTES _____